



Lake Grunwald

FISHERIES STATUS SUMMARY

LOCATION – Lake Grunwald is located at the Grunwald Farms Forest Preserve south of Elburn. This off-the beaten path lake can be accessed by heading west on Main Street from Route 47 (near Fisherman’s Inn). The entrance is off of Lorang Rd. approximately 1.1 miles west of Route 47 (02S035 North Lorang Rd Elburn).

DESCRIPTION – Lake Grunwald is a 15 acre former gravel mine with a maximum depth of 20 feet and an average depth of 8 feet. The lake is owned by the Forest Preserve District of Kane County (FPDKC) and opened in 2012. There is good shoreline fishing access available via a gravel trail around the lake. Electric motors are allowed and a boat ramp is available. Complex structure of drop offs and flats provide diverse habitat in this lake (bathymetric map on reverse). Several fish attracting structures are located in the lake.

MANAGEMENT ACTIVITIES: In 2014, the FPDKC entered into a cooperative management agreement with the Illinois Department of Natural Resources to facilitate fisheries management activities. Channel catfish are occasionally stocked to supplement the population. Site specific regulations apply. A 30 minute electrofishing survey took place on May 12, 2014.

STATUS OF THE SPORT FISHERY – While no trophy size largemouth bass were captured in this survey, bass abundance is very high. This lake does offer boat access (electric motors only) which is extremely rare in the Chicagoland Area. This lake will be entered into the IDNR channel catfish stocking program in the future.

LARGEMOUTH BASS – In our 2014 electrofishing survey, Ninety largemouth bass were captured in thirty minutes of shocking (a rate of 180 fish per hour). These fish ranged in size from 5.7 to 15.0 inches, and weighed up to 1.7 pounds. The average bass in the sample was 9.6 inches long. Only four percent of the catch was over 14 inches, indicating this population still needs a few years before trophy size are available.

BLUEGILL – Bluegill were captured at a rate of 82 fish per hour. This catch rate is a little lower than some other lakes in the area but the size structure is excellent. Bluegill ranged in size from 4.5 to 8.7 inches, with an average size of 6.3 inches. Sixty-one percent of the catch was longer than six inches. This lake offers anglers the chance at a good number of bluegill over 8 inches.

BLACK CRAPPIE – One 12 inch black crappie was captured in this survey. Deeper water in this lake make crappie difficult to detect with electrofishing.

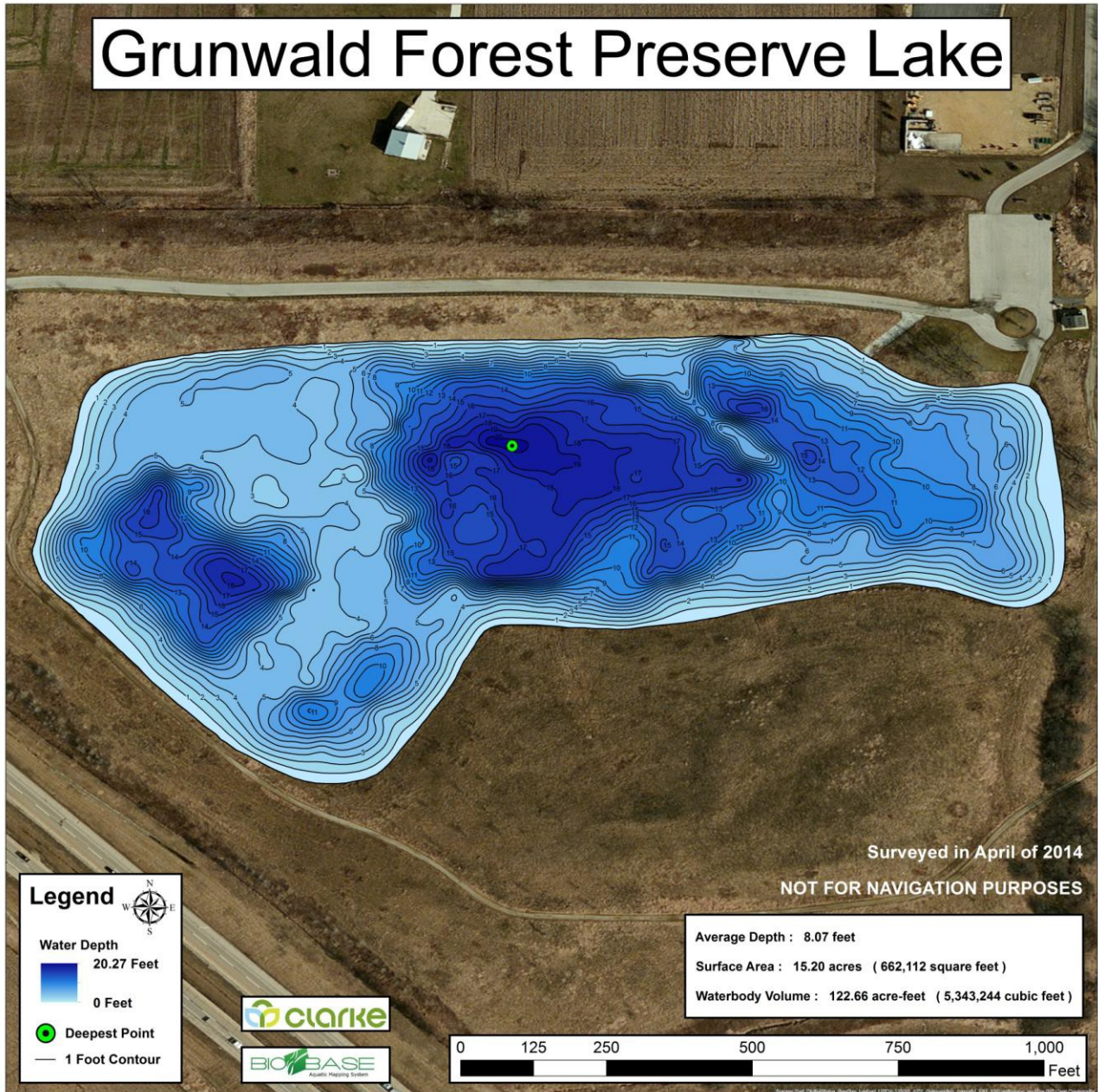
CHANNEL CATFISH – No channel catfish were captured in this survey but they have been previously stocked. Fishing for channel catfish should be better in the future as this lake will be entered into IDNR’s channel catfish stocking program

ADDITIONAL FISH SPECIES: Hybrid sunfish were the only other species detected in this survey.

Grunwald Lake Survey on May 12th, 2014

30 minutes D.C. electrofishing

Species	Number Collected	Length (inches)			Weight (pounds)	
		Min	Max	Avg.	Min	Max
Largemouth Bass	90	5.7	15.0	9.6	0.1	1.7
Bluegill	41	4.5	8.7	6.3	0.1	0.6
Hybrid Sunfish	2	7.9	8.7	8.3	0.5	0.6
Black Crappie	1	12.2	12.2	12.2	0.9	0.9
Total # of fish	134					



For more information call the Forest Preserve District of Kane County at (630) 232-5980 or IDNR Fisheries at (815) 675-2386 ext. 214 or visit: www.kaneforest.com

For general information on fishing in Illinois visit the IDNR Fisheries Division at: www.ifishillinois.org
 To purchase your fishing license go to: www.dnr.illinois.gov