



WELDON SPRINGS STATE RECREATION AREA LAKE STATUS SUMMARY

LOCATION: Weldon Springs Lake is located 3 miles southeast of Clinton in DeWitt County.

DESCRIPTION: Weldon Springs is a fertile 29 acre lake that was built in 1936. The lake has a maximum depth of 38 feet and an average depth of 10.3 feet. There is one boat launch and motors are restricted to electric only. The concession at Weldon Springs operates as a full-service restaurant. Anglers will find bait, tackle, fishing boats and paddle boats available at the concession. The traditional Class A campground has 75 campsites with electricity, vehicular access, sanitary dumping station, shower building, cooking grills, picnic tables, pit toilets, playground equipment, and water hydrants throughout the campground. Weldon Springs' campground is open year-round; the shower building closes in the fall and reopens in the spring. Areas for tent, backpack, large group and youth camping are also available. Primitive backpack campsites are located along Salt Creek.

STATUS OF THE SPORT FISHERY: The sport fishery in Weldon Springs has been managed since 1938. The lake receives stockings of channel catfish and saugeye. The following information is a summary of the major sport fisheries based on periodic fish population surveys.

Largemouth Bass – This lake provides an excellent opportunity to catch a nice largemouth bass. The catch rate for the most recent electrofishing survey resulted in a catch rate of 224 bass per hour. The average catch rate for the past 4 surveys is 197 per hour. Approximately 23% of the all the bass collected were longer than the 15 inch length limit. The largest bass collected weighed 4.9 pounds. Of the bass 8 inches and longer that were collected, 77% were longer than 12 inches and 29% longer than 15 inches, and 2% were longer than 20 inches.

Bluegill - The quality of the bluegill population has been consistent the past 5 years. There is a large number of 6 to 7 inch bluegill.

Redear Sunfish – There are good numbers and sizes of redear sunfish. In the most recent fish survey, approximately 35% of the redear sunfish collected were larger than 7 inches.

Black Crappie – The catch rate for black crappie collected during the fall survey has met the management objective the past 6 years. In the most recent survey, approximately 92% of the black crappie were over 8 inches and 6% were over 10 inches. There are a large number of crappie in the 8 to 10-inch range.

Channel Catfish - Each year Weldon Springs is stocked with 8-inch channel catfish. Anglers should expect to catch catfish in the 16 to 25-inch range. With the stocking program, the catfish population should continue to provide great angling opportunities for channel catfish.

Saugeye – Since 2010, Weldon Springs has been stocked with fingerling saugeye. The most recent spring netting survey resulted in the collection of 28 saugeye ranging in size from 14 inches to 22 inches. The largest saugeye weighed 5.13 pounds. This fishery is developing nicely.

FISHING REGULATIONS: 2 Pole and Line Fishing Only.

<u>SPECIES</u>	<u>LENGTH LIMIT</u>	<u>DAILY CREEL LIMIT</u>
Largemouth Bass	15"	1
Channel Catfish	None	6
Saugeye	14"	6

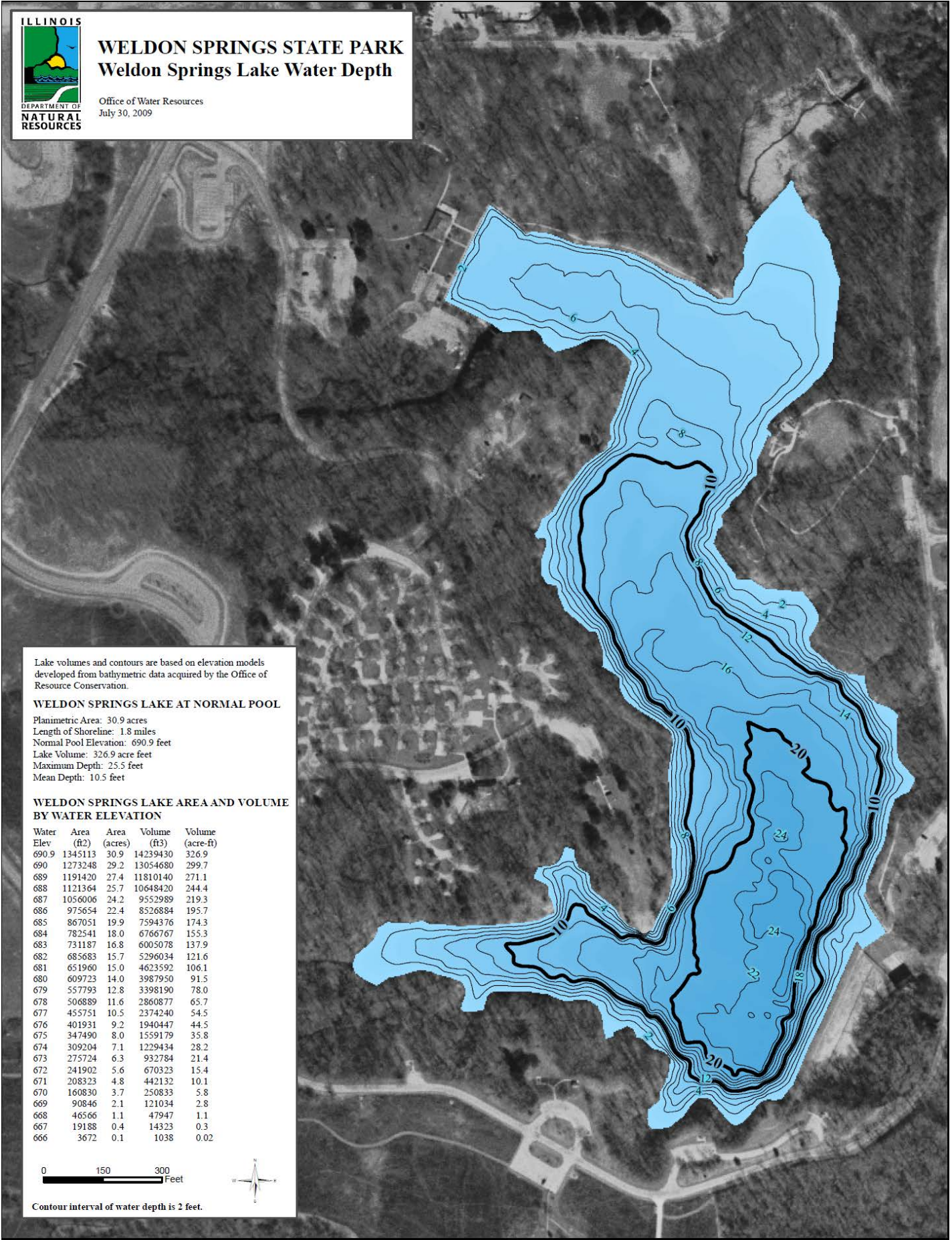
Electric Motor Only

For other species, statewide regulations are in effect. For further regulation information, please consult the current Illinois Fishing Regulation Booklet.



WELDON SPRINGS STATE PARK Weldon Springs Lake Water Depth

Office of Water Resources
July 30, 2009



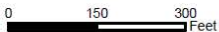
Lake volumes and contours are based on elevation models developed from bathymetric data acquired by the Office of Resource Conservation.

WELDON SPRINGS LAKE AT NORMAL POOL

Planimetric Area: 30.9 acres
 Length of Shoreline: 1.8 miles
 Normal Pool Elevation: 690.9 feet
 Lake Volume: 326.9 acre feet
 Maximum Depth: 25.5 feet
 Mean Depth: 10.5 feet

WELDON SPRINGS LAKE AREA AND VOLUME BY WATER ELEVATION

Water Elev	Area (ft ²)	Area (acres)	Volume (ft ³)	Volume (acre-ft)
690.9	1345113	30.9	14239430	326.9
690	1273248	29.2	13054680	299.7
689	1191420	27.4	11810140	271.1
688	1121364	25.7	10648420	244.4
687	1056006	24.2	9552989	219.3
686	975654	22.4	8526884	195.7
685	867051	19.9	7594376	174.3
684	782541	18.0	6766767	155.3
683	731187	16.8	6005078	137.9
682	685683	15.7	5296034	121.6
681	651960	15.0	4623592	106.1
680	609723	14.0	3987950	91.5
679	557793	12.8	3398190	78.0
678	506889	11.6	2860877	65.7
677	455751	10.5	2374240	54.5
676	401931	9.2	1940447	44.5
675	347490	8.0	1559179	35.8
674	309204	7.1	1229434	28.2
673	275724	6.3	932784	21.4
672	241902	5.6	670323	15.4
671	208323	4.8	442132	10.1
670	160830	3.7	250833	5.8
669	90846	2.1	121034	2.8
668	46566	1.1	47947	1.1
667	19188	0.4	14323	0.3
666	3672	0.1	1038	0.02



Contour interval of water depth is 2 feet.