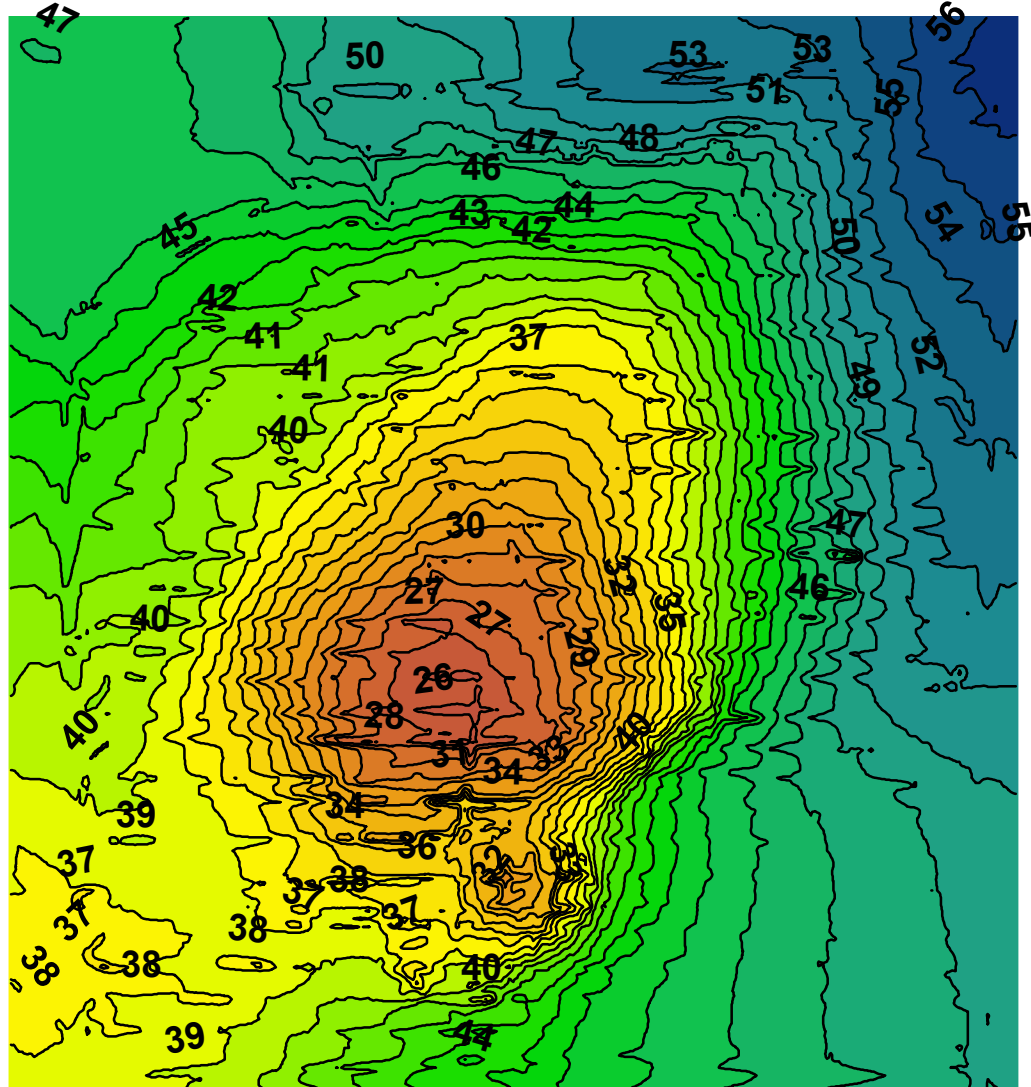
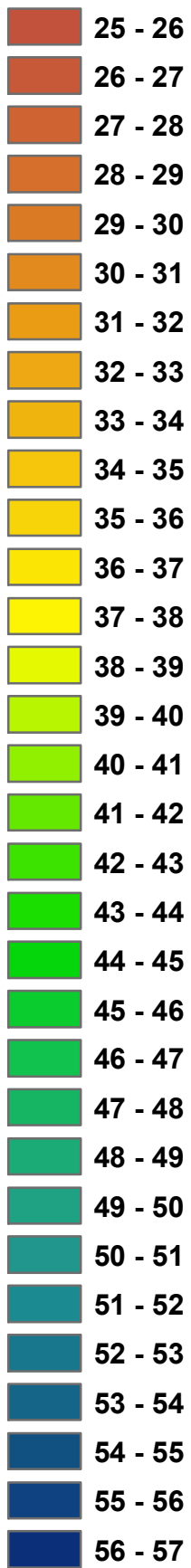


87°33'30"W 87°33'0"W 87°32'30"W 87°32'0"W 87°31'30"W 87°31'0"W 87°30'30"W

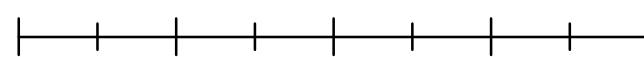
42°14'30"N
42°14'0"N
42°13'30"N
42°13'0"N
42°12'30"N
42°12'0"N
42°11'30"N

Julian's Reef

Depth (m)



0 0.25 0.5 1 1.5 2 Kilometers



42°14'30"N
42°14'0"N
42°13'30"N
42°13'0"N
42°12'30"N
42°12'0"N
42°11'30"N

87°33'30"W 87°33'0"W 87°32'30"W 87°32'0"W 87°31'30"W 87°31'0"W 87°30'30"W